



Tullawong State High School

Soaring to great heights

Explicit Instruction

Explicit instruction engages and motivates students by actively involving them in their own learning, setting high expectations, providing feedback and celebrating success.

At Tullawong, we tailor our classes and lessons to ensure that students achieve best possible results. Our teachers follow routines that help students to master new knowledge and skills. **Explicit Instruction** signposts lesson segments through a series of steps- *I do, We do, You do*.



Core Values

Diligence
Integrity
Courage
Respect

Vision

At Tullawong State High School our core business is quality outcomes for all students.

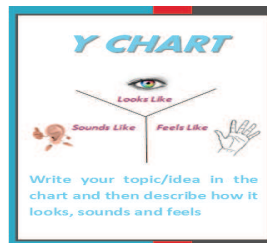
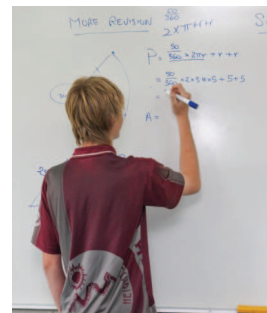
Our Commitment

We will pursue this vision with open hearts, open minds, courage and capability.

I do: Teachers explain, model and demonstrate what is to be learned and how to think. Students watch carefully and listen to the teacher.

We do: Students work with their teacher to practise examples. This supports students until they can demonstrate the skills and knowledge necessary to move to the final, independent step.

You do: This is the final step of the model where students demonstrate skill or knowledge mastery by working independently



Classroom Warm Ups

Our students begin every lesson with a five to ten minute warm up. The warm up may involve recalling terminology, spelling, word activities, pop quizzes, numeracy exercises or literacy activities. The aim of these activities is to consolidate skills and shift knowledge from short-term to long-term memory. This practice gives our students a clear focus for their learning experiences.

Through classroom warm ups our students gain confidence in their knowledge, improve their skills and increase classroom engagement.

Junior Secondary
Schooling

Del Rosso Road
Caboolture QLD 4510
P: 07 5428 5222
F 07 5428 5200

www.tullawongshs.eq.edu.au
www.facebook.com/tullawongstatehighschool